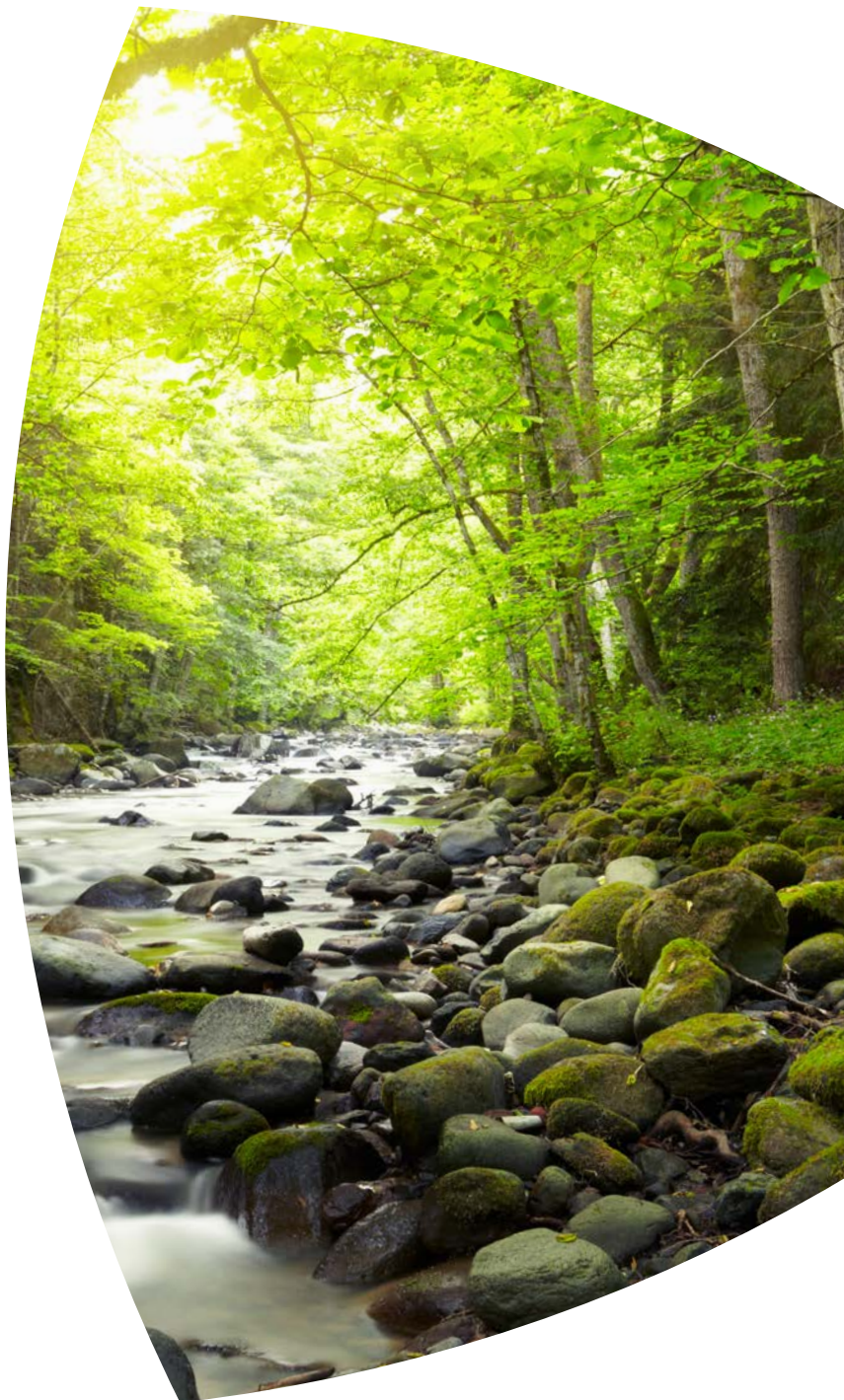


## Environmental Commitment

---

Based on the recognition that it is our responsibility to protect and maintain the health of the global environment as an irreplaceable asset for future generations, Toshiba contributes to the creation and implementation of innovative, new values and processes. All aimed at reducing environmental impact and developing a greener future.



# Environmental Charter

At Toshiba, sustainability is embedded in our corporate philosophy. Concern for the environment and those around us is a priority in all business activities, so that we not only protect the world's resources but your health, safety and future.

We strive to go above and beyond compliance with our environmental commitments. With our efforts translating into a broad programme of business and environmental processes and activities incorporated into every step of our business cycle. Our initiatives are focused on realising a low carbon, recycling based and natural symbiotic society. These activities are divided into sustainability management, Environmentally Conscious Products (ECPs), ecologically compatible processes and sustainability awareness.

“Toshiba takes a practical approach to the challenge of achieving greater sustainability. Based on the concept of eco-efficiency and clearly defined objectives, we systematically work to improve our ratio of value to impact.”

**Our Environmental Charter states Toshiba's commitment to reducing environmental burden:**

- 1 Implement practical environmental management systems which continuously improve business processes in line with Toshiba's eco-efficiency goals.
- 2 From procurement of resource to delivery of products, Toshiba actively focus on resources and services which offer environmental benefits and to negate environmental impact.
- 3 Continue to deliver carbon neutral products at the point of delivery with bespoke carbon offsetting programmes through the Toshiba Carbon Zero Scheme.
- 4 Continuously assess and review the environmental impact of all product lifecycles with the view to highlight and implement new or improved ways to reduce environmental burden.
- 5 Actively promote and enable energy and resource conservation and reduction of hazardous substances throughout all business activities and processes.
- 6 Encourage an open and healthy corporate culture in which the environmental awareness of Toshiba's employees and customers enables effective initiatives at both corporate and personal levels.
- 7 Encourage collection and recycling of all products at the end of their lifetime with a series of easy to use programmes.
- 8 Maintain a close relationship with governments, local communities and other interested parties as well as complying with all laws and guidelines of each country or region and other requirements agreed upon by Toshiba stakeholders.
- 9 Actively disclose information on environmental burden and environmental programmes to all stakeholders and keep them updated on all progress made by Toshiba.



# Environmental Vision 2050

As one of the leading eco-companies, the Toshiba Tec Group is practicing environmental management based on the Toshiba Group's Environmental Vision 2050.

Environmental Vision 2050 is focused on promoting harmony with the earth and contributing towards the creation of a richer, more eco-friendly society and thus creating an environment where every individual can contribute towards a greener future.



“As a signatory to the UN Global Compact, we are working toward the realization of a sustainable society by strengthening ESG (Environment, Society, Governance) efforts across our business activities.”

– Kurumatani Nobuaki  
Chairman and CEO, Toshiba Corporation

– Tsunakawa Satoshi  
President and COO, Toshiba Corporation

## Environmental Vision 2050

Toshiba Group practices environmental management that promotes harmony with the Earth, contributing to the creation of a richer lifestyle for society.



Based on the 'Three Greens' we focus on reducing the environmental impact of every product and process created by us. All of our products are designed with the aim of mitigation of climate change, encouraging the efficient use of resources and effective management of chemicals; the three pillars of our environmental management system.

**Greening of Process:** Environmentally conscious manufacturing.

Striving to achieve one of the world's lowest levels of environmental impact by reducing all manufacturing impacts.

**Greening of Products:** Creation of products with the highest level of environmental performance.

Achieving the highest level of environmental performance in all newly developed products to reduce lifecycle environmental impact.

**Greening of Management:** Continuous improvement of basic activities.

Aiming to excel in environmental management as a corporate member of society through the training of employees and continuous improvement of environmental communications.

# Toshiba Global Efforts

Toshiba are committed to the environment. Our mission is to contribute to creating a sustainable society for the future that is friendly to all people. To ensure we achieve this goal activities are carried out across the globe to promote and enable environmentally friendly behaviour.

## Toshiba Environment Day & Toshiba Baton

Toshiba Group launched the Environmental Action Initiative; designating 5th June 2013 as 'World Environment Day'. A day for Toshiba Group environmental action and all Toshiba employees across the globe to take part in positive environmental activities.

In the two months leading to inaugural World Environment Day we held the Toshiba Baton campaign. Employees passed the baton around the globe to their international colleagues promoting environmentally friendly behaviour. Over the duration over 150 activities took place in over 20 countries.

Related to crucial local environmental themes such as energy and water conservation, recycling and wildlife protection, activities included:

**Biodiversity Open Houses** – Europe

**Shore Cleaning** – America & Asia

**Tree Planting** – China

**Protection of Rare Flora** – Japan

**River Cleaning** – Asia

**Recycling of products and e-waste** – Global



## Tree Planting Project

Toshiba have undertaken the major challenge of planting 1.5 million trees across the globe by 2025. The completion of this project will coincide with the company's 150th anniversary.

As part of this project we have begun several initiatives including the 3 year restoration project in Werdhol, Sauerland, Germany where trees were planted to help replace those lost in the storm of January 2007 'Kyrill'. Indigenous trees such as sycamore, maple and European beech were planted to help establish a new near-natural and stable forest that generates more fresh water resources and restores natural wildlife habitats.

## United Nations Global Compact

For over 15 years, Toshiba have been part of the United Nations Global Compact; pledging to adhere to universal principles covering human rights, labour and the environment. The Global Compact envisages that in the course of business, companies fulfilment of the corporate social responsibilities through compliance with internationally recognised principles will lead to the emergence of a sustainable global economy.

# Sustainable Development Goals

In 2015 the UN General Assembly formally accepted a new set of 17 Sustainable Development Goals (SDGs) succeeding the eight Millennium Development Goals set in 2000. These 17 goals aim to improve the world around us ranging from ending poverty to gender equality and the empowerment of women and girls. These new measurable goals aim to create a better world for everyone by 2030.

Toshiba are proud to support the UN Sustainable Development Goals. To find out more about the goals and how Toshiba Tec supports many of these goals with our Carbon Zero Scheme:

[www.toshibatec.co.uk/sustainability/carbon-zero-scheme/](http://www.toshibatec.co.uk/sustainability/carbon-zero-scheme/)



Toshiba Tec UK supports the Sustainable Development Goals

## How Toshiba supports the SDGs:



Our Energy Efficient Stoves project requires less fuel through its cleaner burning process, therefore less time and money is spent on collecting firewood; freeing up precious time and capital for other income generating activities.



With the Energy Efficient Stoves providing a more efficient way of cooking and a reduction in firewood consumption more income is available for food. Coupled with the time saved collecting firewood users have more time to spend on the homestead/farm.



Projects such as our Borehole Rehabilitation and Energy Efficient Stoves have significantly reduced the contraction of water-bourne and smoke related illnesses through the provision of clean water and cleaner cooking methods.



Projects now enable children to spend more time on their schooling. Further education and skills development is provided alongside stove manufacture and WASH (water, sanitation & health) training is provided by the Borehole Rehabilitation Project.



The Energy Efficient Stoves have enabled women to spend more time on income generating activities. Reduced smoke emissions from stoves allow men to partake in cooking without any stigma. In addition, the projects in Kenya work with local Women's Groups.



The Borehole Rehabilitation project is providing clean water to Ugandan communities.



Our Carbon Zero projects reduce pressure on the local forests. Our greening of process, products, management and technology ensure that Toshiba's consumption and production of products has a minimal impact on the environment.



Through our Carbon Zero Scheme, we contribute towards a reduction in carbon dioxide emissions through the reduction of wood use as a fuel. We are always seeking to reduce impact, re-use resources and improve process.



The reduction of firewood consumption through our Borehole Rehabilitation and Energy Efficient Stoves projects helps to reduce deforestation and protect natural habitats.



Our Carbon Zero projects involve partnerships between multiple countries, the private sector, the local community as well as local NGOs.

# Carbon Zero Scheme

With the help of carbon offsetting experts CO2balance we have created a scheme which enables us to help combat CO<sub>2</sub> emissions through the offsetting of all our products.

Carbon offsetting allows for the investment in projects that save the emission of, or absorb an equivalent amount of CO<sub>2</sub> to that of any Toshiba product's footprint. Through this process emissions are balanced to become 'Carbon Zero' which allows for positive business activities with no detrimental effect to the environment.

We are supporting a number of projects across the developing world. These include:

### African Energy Efficient Stoves

This project provides energy saving cook stoves to villages in Kenya, which result in a reduction in the usage of firewood by up to 50%.

### Kenyan Mangrove Restoration

By replenishing lost or destroyed mangrove forests along the Mombasa Estuary this project helps to re-develop valuable eco-systems both on and off-shore.

### Ugandan Borehole Rehabilitation

By renovating and repairing boreholes in remote villages across Uganda this project helps to restore a safe clean source of drinking water for locals.

### Brazilian Forestry Project

Actively protecting over 71,714 hectares of Amazon Rainforest through educating locals and patrols, the Brazilian Forestry project enables the rainforest to continue to act as a sponge absorbing CO<sub>2</sub> and protecting wildlife.

## Case Study: African Energy Efficient Stoves

One of our most successful projects with the Carbon Zero Scheme has been the provision of energy efficient stoves throughout Africa.

The stoves, designed to replace the traditional three stone cooking method; provides a more efficient and effective solution. Reducing the amount of firewood required, slowing down the consumption of raw materials and lowering the levels of CO<sub>2</sub> emissions released from shorter cooking times.

Alongside environmental benefits the stoves are affecting recipients and local communities in a positive way; improving the health of users, increasing time for other activities and generating new jobs.

Mamma Rukkiya's story provides an insight into the improvements CO2balance stoves are making everyday:

Mamma Rukkiya lives in a two bedroom house with her husband and 3 children. She shares this house with her sister Fatuma. Whilst her husband works as a farmer Mamma Rukkiya stays at home looking after the children, cooking and fixing and creating clothes for a little extra money.

“When I cook with the new stove my food is cooking much faster... I can sew and make more skirts and dresses for selling, we both have more time to do other stuff”

- Mamma Riukkiya



### Bespoke Client Projects

Working together with CO2balance we are also able to extend the Carbon Zero Scheme across other business functions and help customers achieve their wider carbon reduction goals by funding special projects, predominantly in East Africa, that deliver social and community benefits and help us enrich the lives of others through our own work.

Working together with a dedicated client Toshiba were able to commission the construction of two new school kitchens with energy efficient stoves that halved the amount of fuel required to support school feeding programmes.

One beneficiary is the Muhaka Secondary School in Southern Kenya. The new kitchen has made a huge impact on the school and the local community where the school feeding programme directly impacts the number of children that can be educated. More meals leads to more students gaining the ability to study.



## Over 500,000 tonnes of CO<sub>2</sub>

Since June 2009, Toshiba have offset over 500,000 tonnes of CO<sub>2</sub> emissions throughout Europe through our far reaching carbon reduction scheme. To put this in perspective this is equivalent to:



468,740 transatlantic flights



Powering 367,710 homes with electricity for one year



Lighting 7,812,500 energy saving light bulbs for an entire year



Making 12.5 billion cups of tea and coffee



Supplying 1,900,745 37" flat screen TV's with power for one entire year



Taking the train from London to Edinburgh and back 8,333,330 times

# Carbon Zero Scheme Process

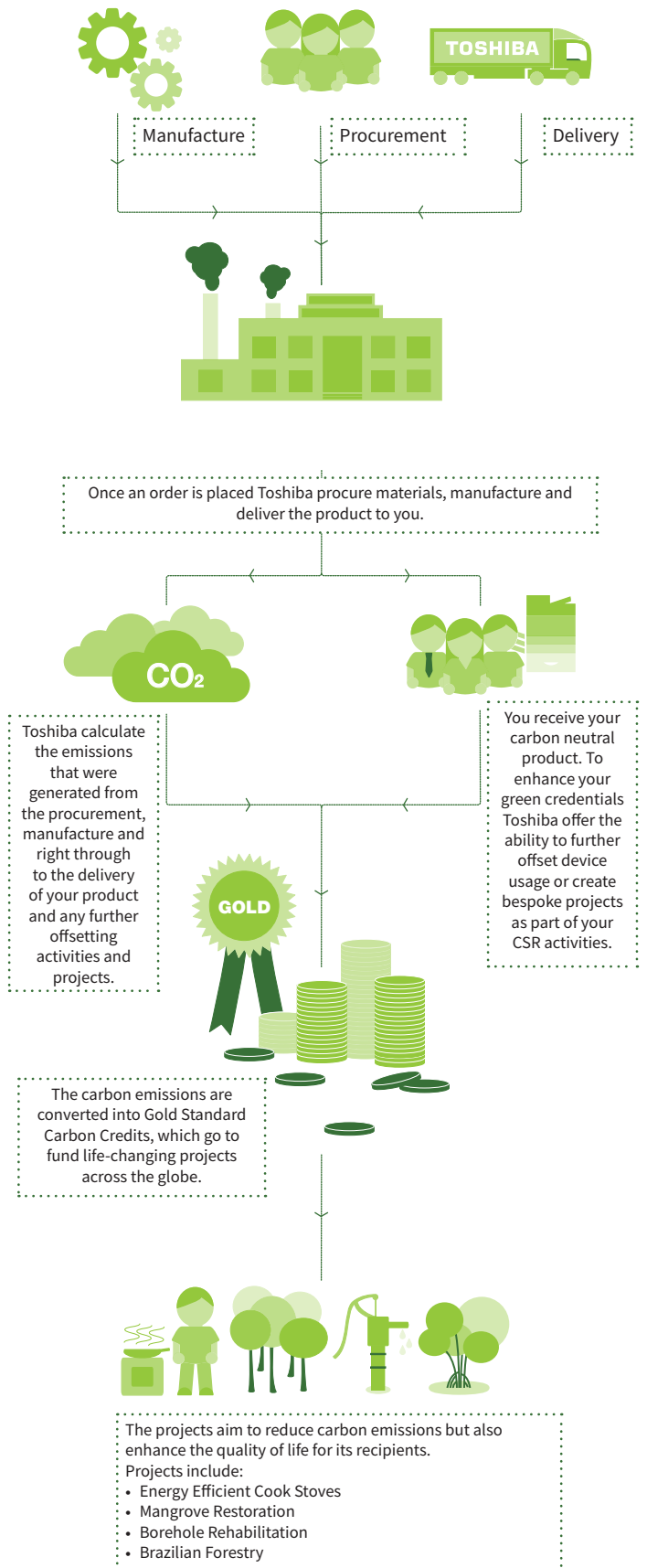
Toshiba has a long history of innovation including environmental awareness with all of its products. During design and manufacturing Toshiba makes every effort to reduce the environmental impact of its activities. However, there are always some unavoidable carbon emissions from the manufacture and operation of its products. The Carbon Zero scheme seeks to minimise the lasting impact of the products as well as to provide support to communities in developing countries.

## Why Carbon Offset my Device?

Carbon offsetting is part of an effective environmental plan. It is important wherever possible to reduce consumption of materials and energy as a priority. This not only helps in the fight against global warming but makes best use of resources and keeps costs down. Carbon offsetting can help further by reducing the release of greenhouse gasses such as Carbon Dioxide to the same value or greater than associated with the product that is being offset. At the same time however, carbon offsetting can assist developing communities such as those in our Energy Efficient Stoves Project by providing low carbon emission products and much needed assistance with basic energy requirements.

## How do we calculate the offset of a Toshiba Device?

The lifecycle analysis of the product begins by assessing all of the materials used to manufacture our products. Throughout the design, production and distribution of Toshiba devices the Greenhouse Gas Assessment is applied to determine a carbon footprint for each product. In addition, we take into account the carbon implications of the consumables, such as toner and paper consumed, as well as the energy requirements for servicing and operation of the device throughout its lifecycle. All the factors combine to give us a Carbon Footprint value expressed in Tonnes which is variable by product. To ensure we cover all eventualities we add a significant buffer figure to our average total.





## Environmentally Conscious Products

Toshiba looks to enhance overall sustainability by reducing environmental impacts throughout its product lifecycles. With the active procurement of environmentally compatible materials, a focus on energy conservation and the abolition of certain chemicals and substances, we systematically improve the ecological balance of our products; developed within our '3 R's' of sustainability – Reduce, Reuse and Recycle – helping to even out the level of valuable resources being consumed from procurement, during use right up to end of life.

It goes without saying that we strictly adhere to the requirements of the EU directives and regulations RoHS (Restriction of Hazardous Substances), REACH (Registration, Evaluation, Authorisation and Restrictions of Chemicals) and WEEE (Waste Electrical and Electronic Equipment). As of January 2012 Toshiba Tec has been compliant with the ErP Lot 4 Voluntary Agreement for Imaging Equipment, part of a framework directive applicable to all EU member states.



Hybrid MFP: e-STUDIO5008LP series

## Hybrid MFP

### The world's first multifunction printing system with erase function.

Combine efficiency, economy and ecology. Toshiba's hybrid technology combines conventional printing with erasable printing, which allows you to reuse paper over and over again. All-in-one single device, which easily connects, integrates and simplifies your workflows - whilst also helping to save valuable resources.

The e-STUDIO5008LP series is equipped with state-of-the-art features and is designed for organisations that want to significantly reduce their environmental impact.

Users can significantly reduce paper consumption, in some cases by up to 80%\*. Saving costs and resources, just by printing in erasable blue and then erasing paper through the e-STUDIO5008LP series or optional e-STUDIO RD301, ready for reuse.

\* Achieved by reusing paper 5 times

## Print Management

Implementing printing policies and monitoring the usage of your print fleet offers you more than just the possibility to reduce costs. Today's environmentally conscious world demands ethical solutions. PaperCut MF has a built-in environmental impact reporting tool, which delivers real, quantifiable data. It even records the number of pages erased on the e-STUDIO RD301, thus showing the benefits of Toshiba's Hybrid MFP.

With this data you can draw the users' attention to their habits. Highlight the environmental impact of their activities to change their behaviour. The resulting reduction will not only help your company save money, it will also make you and your employees better corporate citizens.

## Duplex Label Printing

The compact, rugged and robust DB-EA4D double-sided label printer has been designed to offer a low-cost and green solution for applications requiring dual output. With user-friendly operation and high-speed printing, this innovative technology provides a reliable and efficient alternative to traditional single-sided solutions.

Today's labelling solutions create waste by the need to throw away the backing paper, Toshiba has developed a solution which adds value and usability to a labels backing paper, or the back of a ticket, by printing directly onto it. Dual-sided printing offers various savings aside from the lower media costs.



DB-EA4D

# Environmental Standards

## WEEE2

The Waste Electrical and Electronic Equipment (WEEE2) Directive governs how manufacturers and retailers in Europe behave in regards to recycling. The regulations require businesses to ensure that when they place products on the UK market that they take responsibility for the recycling costs of those products once they have reached the end of their life.

WEEE Recycling process:

- After checking for hazardous components (visual and/or based on material data sheets supplied by the producer), the mechanical processing is applied
- In this process, ferrous and aluminium material is initially separated
- This is followed by the separation of the copper-based concentrate in which all precious and other non-ferrous metals are present
- During the initial and the final stages of the process plastics are also separated from the metal fractions
- Continuous batch sampling allows for the analysis of the substances and materials from the product streams, which have an environmental impact on downstream processes

Toshiba Tec UK fully complies with the WEEE2 Directive with our device recycling schemes available for all our customers. Working together with DHL Environmental Solutions, Approved Authorised Treatment Facilities (AATF) who collect our WEEE. The treatment facility is targeted by the Environment Agency to produce the maximum amount of re-usable product with a minimum target of 65% of returned WEEE. We aim to encourage and incentivise all users to recycle all their devices and consumables for re-use wherever possible. Lowering the pressure for new materials on the earth's natural resources and reducing the risk of potentially hazardous substances entering landfill.

## RoHS

The Restriction of the use of certain Hazardous Substances (RoHS) in Electrical and Electronic Equipment (EEE) Directive was introduced in 2006 and transposed into EU law on January 2nd 2013. The legislation bans the placing on the EU market new EEE containing more than the agreed levels of:

- Lead (Pb)
- Cadmium (Cd)
- Mercury (Hg)
- Hexavalent Chromium (Cr+6)
- Polybrominated Biphenyls (PBB)
- Polybrominated Diphenyl Ethers (PBDE)

The National Measurement Office is the market surveillance authority responsible for enforcing the RoHS legislation in the UK.

Since its introduction in July 2006 Toshiba have conformed and exceeded all requirements of the RoHS directive for all Toshiba products.

RoHS is part of Toshiba's 'Monozukuri' programme which includes environment conscious activities such as 'Green Procurement' using materials more efficiently, finding alternatives for hazardous substances and designing products which can be easily recycled.



## REACH

Registration Evaluation Authorisation and restriction of Chemicals (REACH). A European regulation which came into focus on the 1st June 2007 and replaced a number of European Directives and Regulations with a single system.

REACH has several aims:

- To provide a high level of protection of human health and environment from the use of chemicals.
- To make the people who place chemicals on the market (manufacturers and importers) responsible for understanding and managing the risks associated with their use.
- To allow free movement of substances on the EU market
- To enhance innovation and competitiveness of the EU chemical industry.
- To promote the use of alternative methods for the assessment of hazardous properties of substances e.g. quantitative structure-activity relationships (QASR).

Based on Toshiba's commitment to put concern for the environment and our customers as a priority in all our business activities, we meet all requirements specified by REACH regulations and is committed to providing our customers with information about the chemical substances in our products, according to REACH regulation with our Environmental Safety Data Sheets.

## Waste Packing Compliance: Packaging Recovery Notes System (PRN)

The PRN system enables packaging producers to carry out their obligations to recycle packaging waste through purchasing PRNs and PERNs. This provides evidence of the recovery or recycling being carried out, and is a substitute for businesses meeting their obligation through their own recycling efforts.

Reprocessors generate income through the sale of Packaging Recovery Notes, which can then be reinvested in recycling projects to ensure that the UK meets its obligations under European regulations. As such PRNs are investment tools which ensure that recycling and recovery continues to grow.

Not only do Toshiba work with accredited reprocessors to recycle waste produced by the Toshiba offices, we also operate the Toshiba Eco Box Scheme, a programme offered to customers for the recycling of used and waste Toshiba toner.

Each Eco Box holds approximately 20 used toner cartridges, and once full, the customer then places an order with our registered carrier who will deliver the box to our contracted recycling centre, where the used toner cartridges will be recycled in accordance with environmental regulations.

## PAS 2060

PAS 2060 has been developed by the British Standards Institute to aid organisations achieve Carbon Neutrality. PAS 2060 is a framework methodology for achieving and demonstrating carbon neutrality within business activities – allowing organisations to improve their environmental credentials with accuracy and transparency.

Toshiba are working towards PAS 2060 accreditation through a series of frameworks and programmes including:

- Lower emission vehicles.
- Annually offsetting all CO<sub>2</sub> emissions from our company's energy consumption and travel use.
- Implementing greener technologies, improving energy consumption and improving internal practices.

## ISO 14001:2008

ISO 14001:2008 sets out the criteria for an environmental management system. It applies to those environmental aspects that the organisation identifies as those which it can control and influence. The implementation allows for:

- Improved waste management.
- Reduction in consumption of energies and materials.
- Improved distribution impact.

All Toshiba production facilities are certified to the international standard ISO14001:2008. Further to this Toshiba is fully compliant with the ISO14001:2008 standard. This voluntary commitment to maintaining environmental management programmes guarantees that all Toshiba products and activities are produced and carried out in line within the strictest environmental criteria.

### **About Toshiba Tec UK**

Toshiba Tec UK Imaging Systems Ltd is part of the globally operating Toshiba Tec Corporation, active in various high-tech industrial sectors.

Toshiba Tec Corporation is a leading provider of information technology, operating across multiple industries. With headquarters in Japan and over 80 subsidiaries worldwide, Toshiba Tec Corporation helps organisations transform the way they create, record, share, manage and display information.

For more information please contact us:

#### **Toshiba Tec UK Imaging Systems Ltd.**

Abbey Cloisters, Abbey Green, Chertsey, Surrey KT16 8RB

#### **Telephone**

+44 (0)843 2244944

#### **Email**

info@toshibatec.co.uk

#### **Website**

www.toshibatec.co.uk