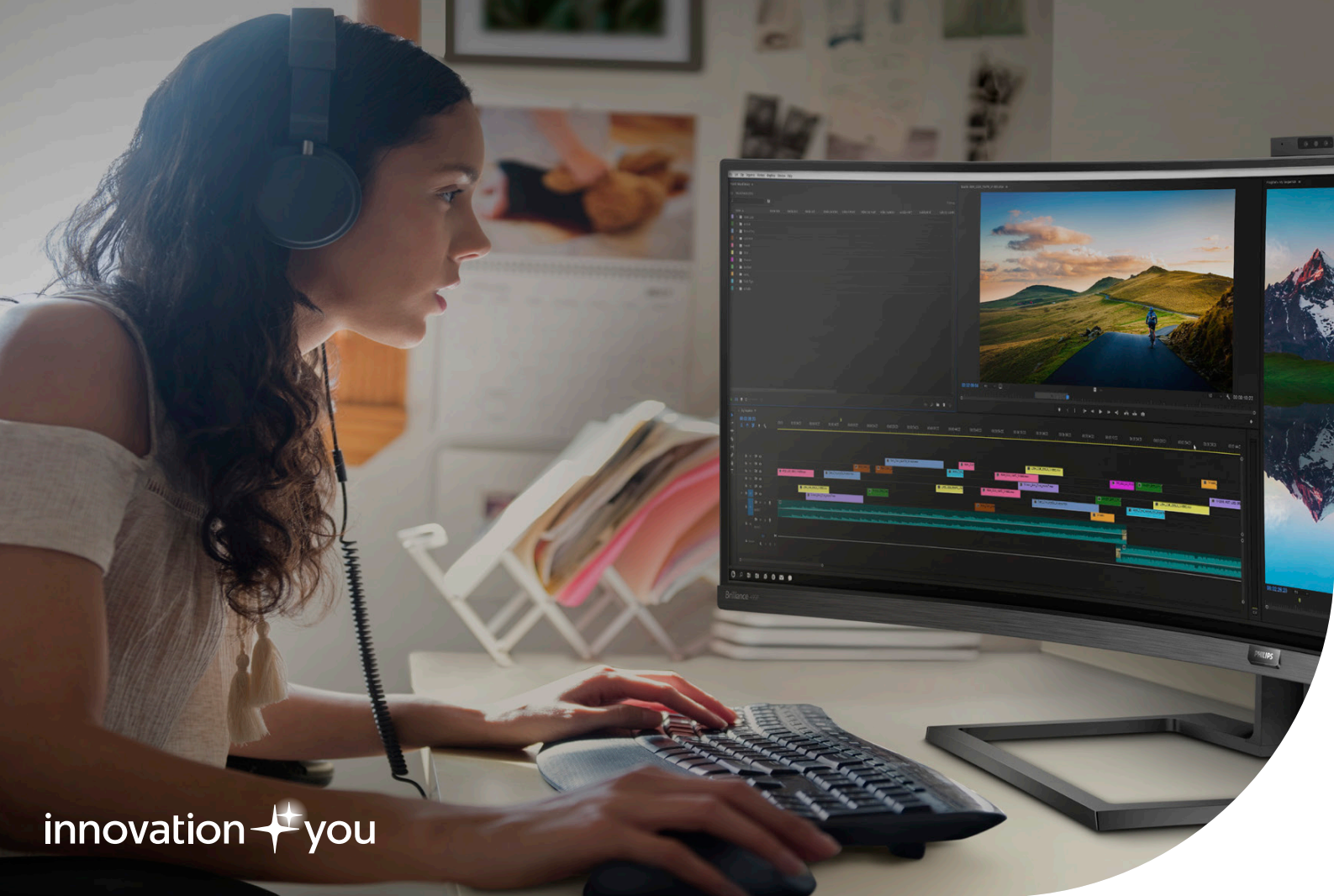


PHILIPS

Monitors

USBC Monitor Solutions



innovation ✨ you

Introducing USB-C Technology

Philips B9 Series

The Philips B line monitor with USB-C docking replaces cable clutter. You can view Full HD image and recharge your laptop all at the same time with a single USB-C cable. Although not a Full Docking solution they are ideal for smaller budgets and a keyboard and mouse are all connectable making it perfect for home or home office working environments.

SmartErgo base, Flicker-free and LowBlue mode are all features that make working easy on the eyes.



243B9/00

- 24.3" IPS Full HD display
- USB-C connector, HDMI and DisplayPort
- Powersensor technology for energy and cost savings
- 150mm Height Adjust Ergo base



273B9/00

- 27" IPS Full HD display
- USB-C connector, HDMI and DisplayPort
- Powersensor technology for energy and cost savings
- 150mm Height Adjust Ergo base

Simplicity that stands out

Stylish design for home or work that delivers all the benefits of USB-C technology, this Red Dot Design Award-winning monitor delivers sharp QHD stand-out visuals in an ultra-slim bezel-free display. Trimmed with all ports and one-cable USB-C connectivity in a sleek geometric base for a clean set-up.



276C8/00

- 27" IPS Quad HD display - 2560x1440 resolution
- USB 3.2 high-speed data transfer
- UltraWide-Colour - High Dynamic Range (HDR)
- Effortlessly smooth gameplay with AMD FreeSync™ technology
- LowBlue Mode, Flicker Free technology

Key Full Dock Solution

USB-C Docking technology

Compatibility with phone, table, mini-pc and notebook technology via USB-C for freedom to work anywhere.

Philips range of monitors are engineered with an integrated docking solution based on the USB Type-C standard (Thunderbolt™ standard), delivering a simple, practical way to carry different signals on the same cable and includes built-in RJ45 ethernet and DaisyChain capability for multi-monitor set-ups.

Now you can rely on a single solution for transferring data, connecting video and powering devices in a fast, straightforward way.



243B1/00

- 23.8" Full HD IPS display with USB-C docking
- DisplayPort, HDMI and next-Gen USB 3.2 for fast data transfer
- Built in RJ45 Ethernet, DisplayPort Out
- 150mm Height Adjust and Smart ErgoBase
- PowerSensor, LowBlue Light and Flicker Free technology



272B7QUPBEB/00

- 23.8" QHD IPS display with USB-C docking
- VGA, DisplayPort, HDMI, DVI and USB 3.0 for fast data transfer;
- Built in RJ45 Ethernet, DisplayPort Out
- 150mm Height Adjust and Smart ErgoBase
- PowerSensor, LowBlue Light and Flicker Free technology



329P9H/00

- 31.5 4K UHD display
- Built in RJ45 Ethernet, DisplayPort Out
- DisplayPort, HDMI x 2, USB 3.1 x 4
- 180mm Height Adjust and SmartErgo Base
- LowBlue Light and Flicker-free technology



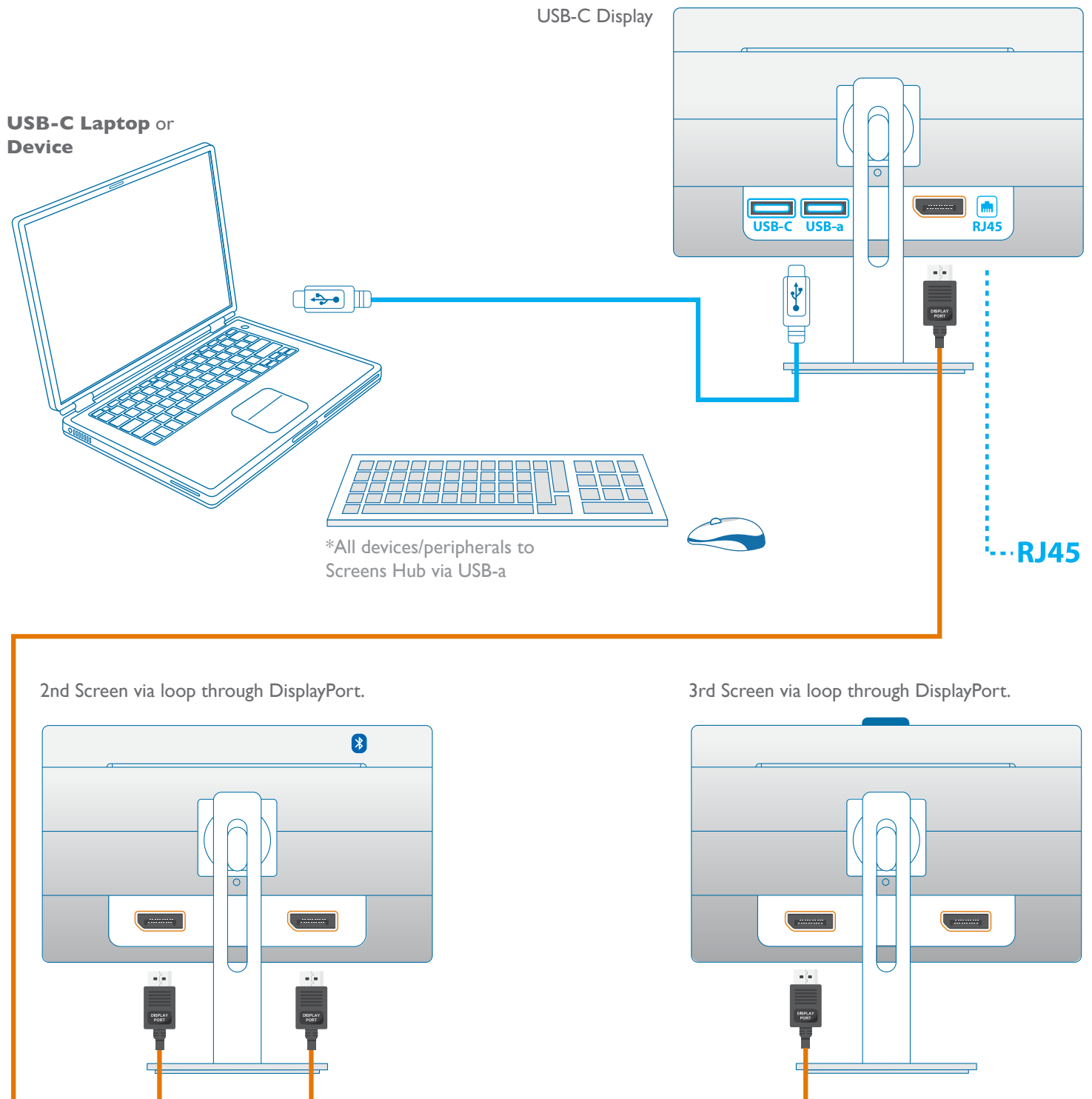
328P6AUBREB/00

- 31.5 QHD display 2560x1440 or 2560x1080
- Built in RJ45 Ethernet, DisplayPort Out
- DisplayPort, HDMI x 2, USB 3.1 x 4
- 180mm Height Adjust and SmartErgo Base
- LowBlue Light and Flicker-free technology

Integrated Dock Technology

Multi-media set-up solution with Web-Cam

Highly versatile, USB Type-C supports full DisplayPort audio/video with backward compatibility through dedicated adapters. This lets you connect your device to one DisplayPort monitor and, from here, daisy-chain additional displays as your needs dictate.



Find Your Perfect Partnership

Dual Screen Aesthetic and Image Uniformity

With the Philips integrated dock solution, you can easily Daisy Chain multiple screens together via USB-C and Displayport technology (as shown in Page 4). When two or more screens are working in such close proximity to each other, it is practical for the design properties to be matching but also essential for the image quality to be comparable. Below are the recommend partnerships in our 24" and 27" product categories.

The solutions use the same high quality IPS panels that have been calibrated to the same rigorous standards before leaving our factories, thus allowing a simple set up to on desk and side by side image matching you would expect.



242BIH/00

- 23.8" Full HD IPS display with Windows Hello™ webcam
 - DisplayPort, HDMI, DVI inputs
 - 150mm Height Adjust and Smart ErgoBase
 - PowerSensor, LightSensor and Flicker Free technology
- Perfect Partner Match with: 243BI



243BI/00

- 23.8" Full HD IPS display with USB-C docking
- DisplayPort, HDMI and next-Gen USB 3.2 for fast data transfer
- Built in RJ45 Ethernet, DisplayPort Out
- 150mm Height Adjust and Smart ErgoBase
- PowerSensor, LowBlue Light



272B7QUPBEB/00

- 27" QHD IPS display with Docking technology
 - DisplayPort, HDMI and next-Gen USB 3.2 for fast data transfer
 - Built in RJ45 Ethernet, DisplayPort Out
 - 150mm Height Adjust and Smart ErgoBase
 - PowerSensor, LightSensor and Flicker Free technology
- Perfect Partner Match with: 272B7QPJEB



272B7QPJEB/00

- 27" QHD IPS display with Docking technology
- DisplayPort, HDMI, USB 3.0 and VGA inputs
- 150mm Height Adjust and Smart ErgoBase
- PowerSensor, LightSensor and Flicker Free technology

Ultra and SuperWide Solutions

a new level of productivity

21:9 and 32:9 Ultra and SuperWide Philips screens are designed with multitasking in mind. Connect and view two different sources at the same time with advanced Multiview technology. HDMI, DVI and DisplayPort connections let you access almost any device while USB 3.0 and USB-C connectivity provides superspeed data transfer. The IPS panel delivers distortion-free viewing from any angle. The slim, elegant design features an Ultra Narrow Bezel to further maximize your viewing area. No matter what you need to accomplish, this display takes productivity to the extreme.

Built-in KVM switch to easily switch between sources

With the MultiClient Integrated KVM switch, you can control two separate PCs with one monitor-keyboard-mouse setup. A convenient button allows you to quickly switch between sources. Ideal for setups that require dual PC computing power or sharing one large monitor to show two different PCs.

Narrow-border display

The new Philips displays feature ultra-narrow borders which allow for minimal distractions and maximum viewing size. Especially suited for multi-display or tiling setups like gaming, graphic design and professional applications, the ultra-narrow border display gives you the feeling of using one large display.



reddot award 2018
winner



346B1C/00

- 34" WQHD display with USB-C Docking technology
- MultiClient Integrated KVM switch for dual PC computing
- DisplayPort, HDMI and next-Gen USB 3.2 for fast data transfer
- Built in RJ45 Ethernet, DisplayPort Out
- 180mm Height Adjust and Smart ErgoBase
- PowerSensor, LightSensor and Flicker Free technology



499P9H/00

- 48.8" Superwide 32:9 - Display HDR400
- USB-C 3.1 Gen 2 docking
- 5k Resolution 5120 x 1440 - 1800 R Curvature
- HDCP 2.2 / RJ45 / DisplayPort / HDMI x 2 / USB 3.1 connectivity
- 130mm Height Adjust and Smart ErgoBase
- LowBlue Mode and Flicker Free technology

Not quite ready for USBC yet?

Philips offer display solutions for this through reverse compliance to legacy USB-A by having both USB Type-C and USB Type-A ports for the immediate future.

With docking monitors with built-in DisplayLink Technology, users can benefit from forwards and backwards USB compatibility with virtually any recent notebook. USB docking can boost business productivity and reduce costs.

Securely sign in with pop-up webcam with Windows Hello™

Phillips' innovative and secure webcam pops up when you need it and securely tucks back into the monitor when you are not using it. The webcam is also equipped with advanced sensors for Windows Hello™ facial recognition, which conveniently logs you into your Windows devices in less than 2 seconds, 3 times faster than a password.



241B7QUBHEB/00

- 23.8" Full HD IPS display with docking technology
- One USB Dual-mesh cable with Type C and A connectors
- Once cable delivers video, Ethernet, power charge and DisplayLink functions.
- Built in RJ45 Ethernet, DisplayPort Out
- Securely sign-in with pop-up webcam / Windows facial recognition
- 150mm Height Adjust and Smart ErgoBase
- PowerSensor, LightSensor and Flicker Free technology



272B7QUBHEB/00

- 27" QHD IPS display with Docking technology
- One USB Dual-mesh cable with Type C and A connectors
- Once cable delivers video, Ethernet, power charge and DisplayLink functions.
- Built in RJ45 Ethernet, DisplayPort Out
- Securely sign-in with pop-up webcam / Windows facial recognition
- 150mm Height Adjust and Smart ErgoBase
- PowerSensor, LightSensor and Flicker Free technology

Meet Your MMD Philips Business Support Team

RICHARD JAMES

Tender/Bids Specialist

Tel: 07970 545292

Email: rjames@philipsdisplays.co.uk

SIMON FULLER

Corporate Sales Specialist

Tel: 07771 974636

Email: simon.fuller@tpv-tech.com

MANO PARMAR

Channel Sales Manager

Tel: 07956 924690

Email: mano.parmar@tpv-tech.com



philips.com/monitors